

Local Wisdom in Designing Interior Design, Review of Cultural Arts and Design Style

Tunjung Atmadi¹, Yananto Mihadi Putra², and Ali Ramadhan³

¹Faculty of Design and Creative Art, Universitas Mercu Buana

²Faculty of Economics and Business, Universitas Mercu Buana

³Faculty of Design and Creative Art, Universitas Mercu Buana

tunjung.atmadi@mercubuana.ac.id, yananto.mihadi@mercubana.ac.id,
ali.ramadhan@mercubuana.ac.id

Abstract - Local wisdom is a system of values and norms that are arranged, practiced, understood and applied to local communities based on the understanding and their experience in interacting with the environment, in the development of interior design, local wisdom It can also be very instrumental in the design of interior design. Can collaborate on styles of interior design can be realized, it will be very interesting interior design, as well as safe, comfortable and harmonious. Based on the above, then the exposure in this study the author wanted to examine the application of the local wisdom in designing interior design that is associated with the development of the design. The methods used in this study is a qualitative descriptive method, approach to interior design pragmatically, topologies and have that is an important element in the design. The concept of Paul Laseau how to review the achievement of the concept of local wisdom applied in the process of designing the interior design. Special purpose to be achieved in this research is publication research and development results through on higher education, Journal of national and international journals. Expected in this research study is to apply the concept of local wisdom on designing the interior design, which is applied to the shaper of space.

Keywords: local wisdom; design concept; interior design

INTRODUCTION

Interior design is the study of the designing of artwork which is in a building and is used to human problem solved. This knowledge purpose for creating a built environment (inner space) include supporting elements, both physical or non-physical. So the quality of human life that is in it for the better. Interior design is a science that cannot be limited in scope, which has some relevance with other knowledge including the science of Architecture, the science of contraction, the science of art, and science of craft art.

The designing inner space or interior design basically have a focus point in three elements forming space, that is basic element/floor, beside element/ wall and top element/palate, the three of those elements designing through certain methods so as to produce some concepts of style and themes interior design which can be combined with a local wisdom from our cultural arts. Culture has closely related to local wisdom. Because in the local culture, local wisdom also dissolves in it. Although local wisdom in one culture is different from other cultures because it is inappropriate with human experience, but the essence of local wisdom remains the same, that is the result of human intelligence.

LITERATURE REVIEW

According to Istiawati, local wisdom is the way people behave and act in response to changes in the physical and cultural environment. A conceptual idea that lives in society, growth and develops continuously in the public awareness of the nature related to the sacred life to the profane (the daily part of life and its ordinary nature). Local wisdom can understand as likewise local thought, full of wisdom, good value, embedded and followed by community members.

Conceptually, local wisdom and local superiority are policies that rely on the traditional philosophy of values, ethics, morality, ways, and traditionally formed behaviors. Local wisdom elements can be applied to any media in the building field because in local wisdom have interesting philosophy for applied to design interior design. Nowadays interior design style leads to collaboration/a combination of

elements local wisdom with style interior design, for increase "ambiance" or ethnicity atmosphere from designing an interior design in residential buildings, commercial buildings, and other buildings.

METHODS

The method of writing this research is a method of desk research by conducting pragmatically, typologically and analogically on sources obtained from books, research reports, and journals that discuss local wisdom in interior design. The design method used is the design process in which there are 2 parts, the analysis of the problem identified, examined, dissected, and analyzed. From this stage, the designer continues with a proposal idea about how to solve the problem. The second stage is synthesis, where the parts are drawn together to form a solution which is then applied as an optimal solver. Designing the process method, in this case, can be seen on the graph as follows:

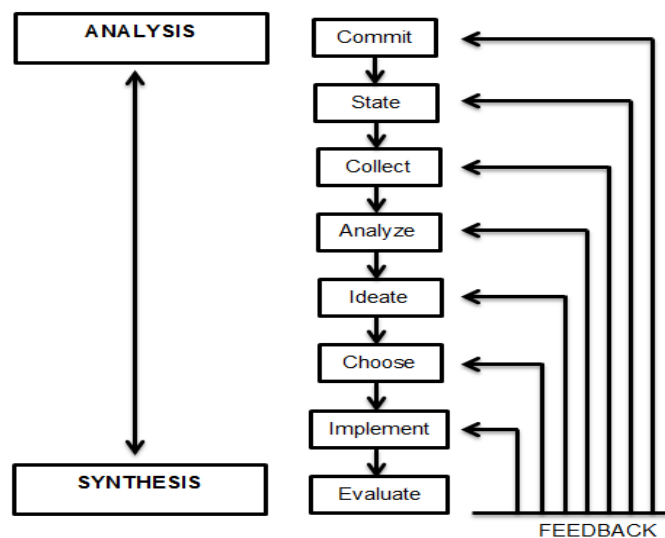


Figure 1. Graph of Design Process Thinking

Information:

1. Commit: accept or committed to the issue.
2. States: define the problem.
3. Collect Collecting fact.
4. Analysis Analysis of the problem and data that has been collected. The idea is issued in the form of schematic ideas and concepts.
5. Choose: Choose the alternative the most appropriate and optimal from existing ideas.
6. Implement: implement depictions in the form of 2D and 3D imaging and supporting presentations.
7. Evaluate: reviewing the resulting design, whether it has been able to answer the brief and solve the problem.

The design process used in this designing used method from Paul Laseau on a book; Graphic Thinking for Architects & Designers.

RESULT and DISCUSSION

Based on the method of Paul Laseau and several case studies the designing of the interior design is expected to represent and also can be understood as a form / shape the diversity of local knowledge in the design of the interior design as a review of art, culture and fashion design, as follows:

- Designing the Interior design of the Bali Pandawa Resort.
- Designing the Interior design of the Sepinggan Airport's Executive International Lounge.
- Designing the Interior design of Gramedia Bookstore.
- Designing the Interior design of the Martha Tilaar Salon Day Spa.

- Designing the interior design of the Prambanan Heritage Hotel.
- Designing the Interior Design of Residential.

The concept of interior design is the rationale for a designer to solve problems or design problems. This can be determined after the designer is able to identify or conclude design problems as material for synthesis and analysis. The design concept is limited to the concept of style and theme so that the discussion can focus on that is.

Designing the Interior design of the Bali Pandawa Resort.

Use of concept "**Balinese Folk Natural**" This is because the high majority of tourists who come to Bali aiming to "**Back to Nature**" that is back to nature which is represented in the elements of "**life folk**". This can be a new concept and unique for Hotel in Bali. The combined with the concept "**local content**" Bali which can be a characteristic of the hotel itself as a hotel domiciled in the area of Bali so that cultural wealth can remain elevated through the application of interior design.

The use of natural colors in the room aims to give the impression of being clean and holy. This natural color is taken from the colors of Hindu religious clothes and also frangipani flowers that are identical to those of Balinese culture. in addition, the impression of local content on this concept is shown by raising the mythological character of the Balinese people, one of which is made of padas material considering the location of this resort hotel in the Uluwatu area which is rich in padas. And also the color selection from the indirect lighting is taken from the color of Bunga Cempaka which is often used by Balinese people in several religious events. Then to strengthen the impression of its natural folk, using panels and wood-patterned finishing furniture and wide window openings and the position of furniture in "open space" so that the surrounding natural scenery can be enjoyed by room users as much as possible.

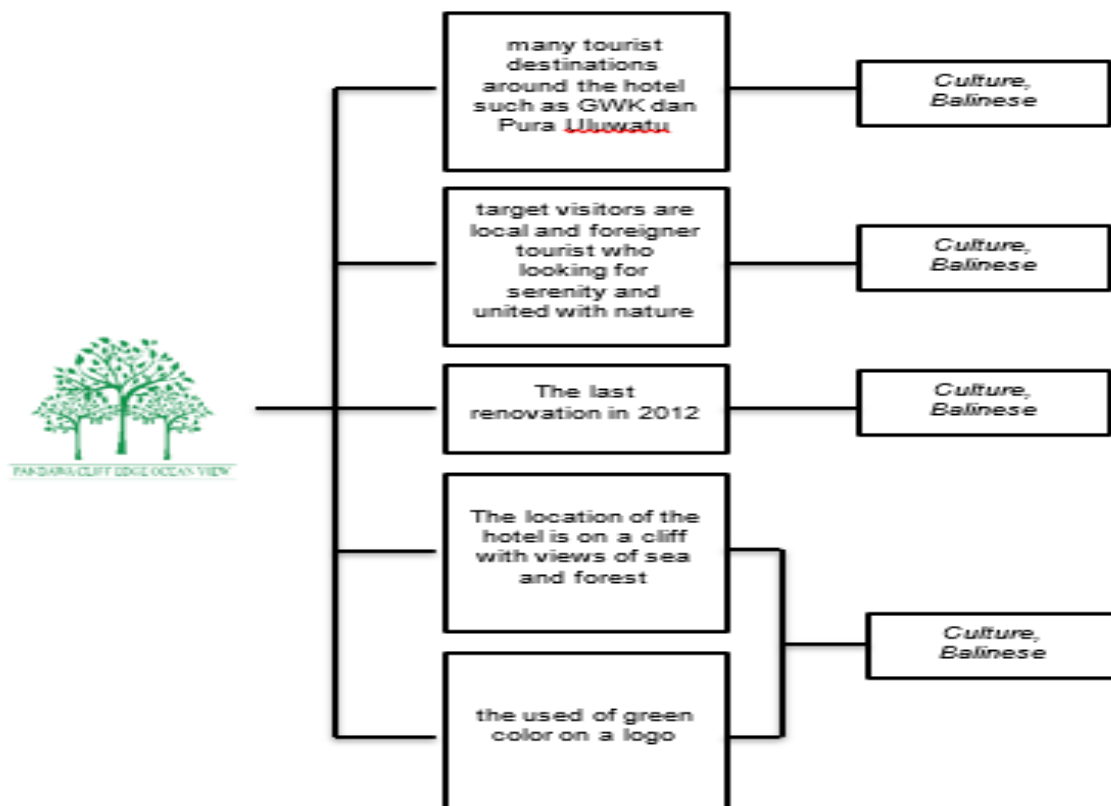


Figure 2. Chart concept and Themes

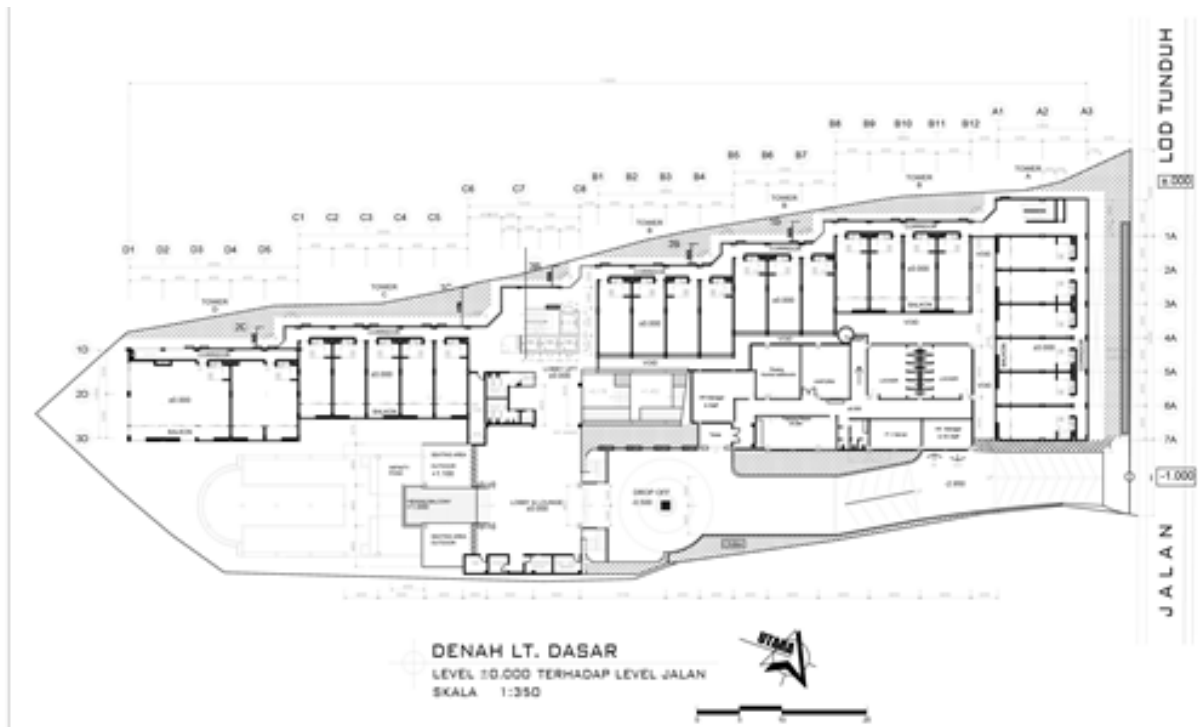


Figure 3. The floor plan layout



Figure 4. Mind Mapping



Figure 5. The style concept and theme



Figure 6. Perspektif space

Designing the Interior design of the International Executive Lounge at Sepinggan Airport.

The display style is **modern**, where the airport is one of the entrances of a country or region, where guests come from abroad, therefore the design must keep up with the times, not only service system modern, but the design displayed should be modern, it is also affected by the demands of human

consumptive behavior against everything new, including design. In designing the International Executive lounge, where this area is one of the facilities for the waiting room of the international airport terminal's.

The theme shown is Luxury of Kenyah, which exposes the uniqueness of the tribe, by using ornaments and color combinations that will be used in the lounge, which will be packaged into a luxurious design. Based on the location of Sepinggian Airport located in East Kalimantan, the author tries to expose the uniqueness of the tribe, by using ornaments and color combinations that will be used in the lounge, which will be packaged into a luxurious design. The concept of Sepinggian Airport city mall airport is inspired by the sea waves in the eastern Kalimantan province. modern but still environmentally friendly. The concept is dominated by the use of white to create a modern spacious atmosphere. The design vision is to balance the modern space by matching the unique colors of Kalimantan, with the tradition of rusting wood against glass and color. The impression that you want to show is the impression of luxury and culture. The image displayed is luxury in accordance with the target passengers. And cultured according to the characteristics of the Dayak tribe.



Figure 7. The floor plans of an airport

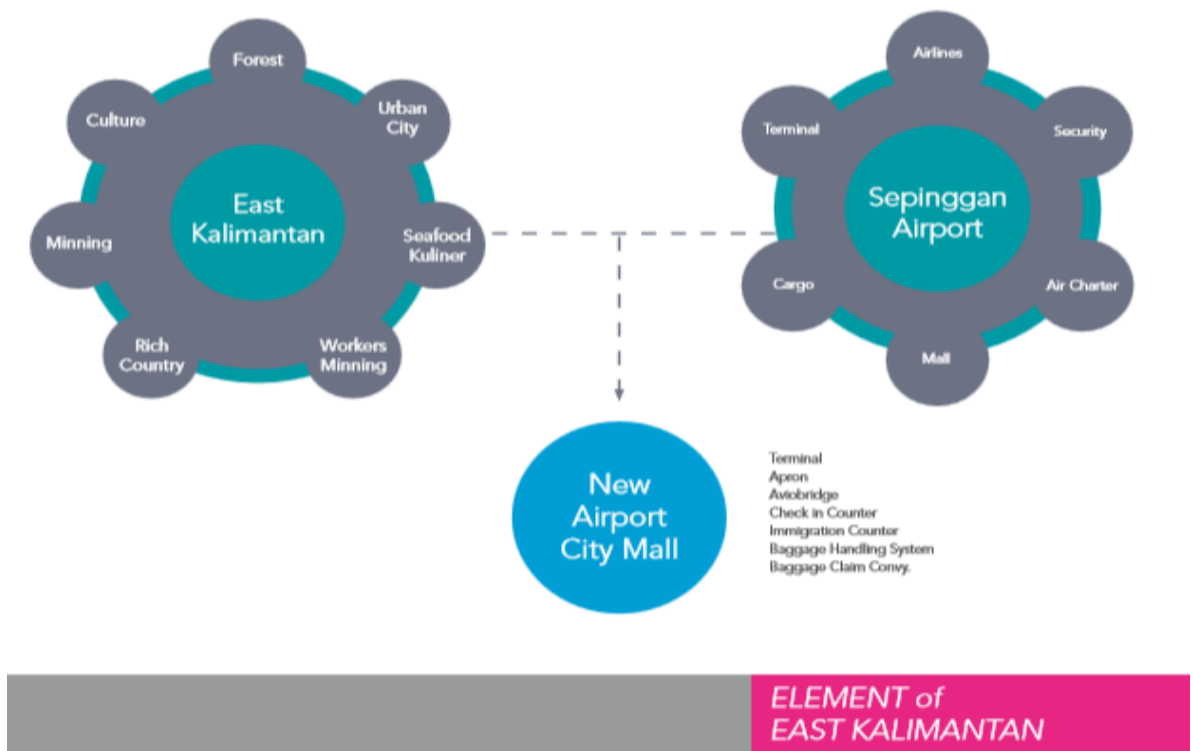
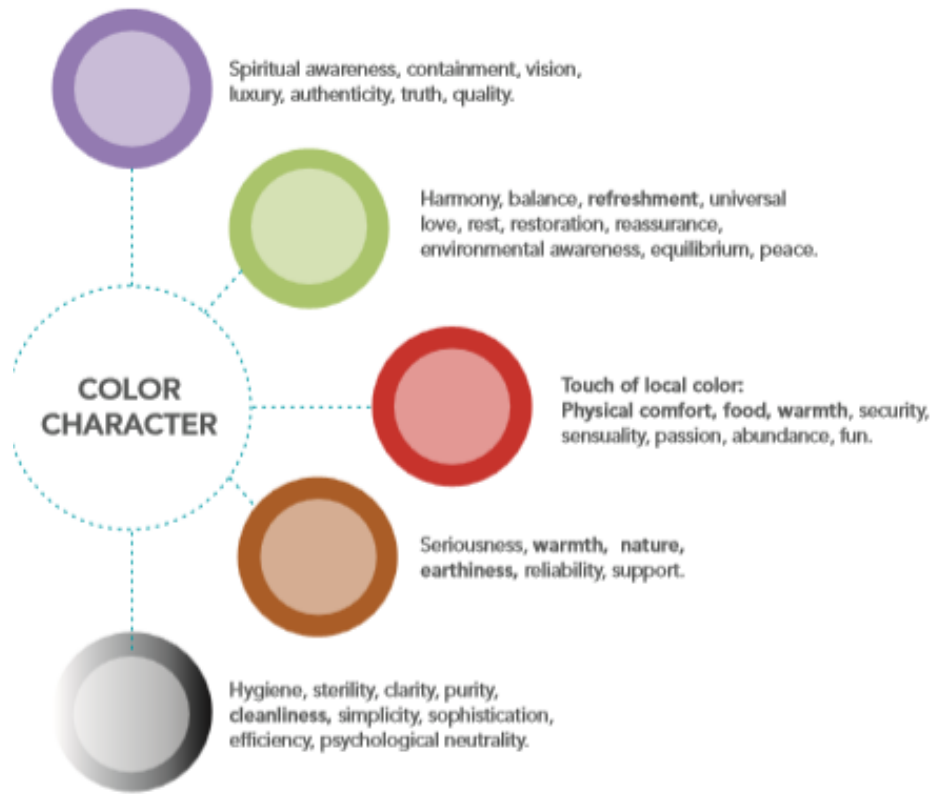


Figure 8. The style concept and theme



DESIGN OBJECTIVES & CRITERIA



Figure 9. Objectives design & Criteria



Figure 10. The concept of image space



Figure 11. Perspectives Lounge space



Figure 12. Perspectives Lobby

Designing the Interior design of the Gramedia Bookstore

Unique interior design is the main attraction for the community. The selection of the **Modern Streamline** concept is based on the development of modern society which is increasingly modern in its lifestyle of wanting a bookstore that develops the interior design so it is not monotonous by showing off its book collection but also the visual aesthetics of its bookstore's interior.

Modern style is a design that is ornamental poor, simple, functional, and always keeps up with the times that are applied to materials that will be used in the form of simpler ceilings, walls, and floors to support the modern style of the interior of Gramedia bookstores.

Streamline is a theme applied to the interior design of Gramedia bookstores. Streamline itself appears because of technological advances in speed, streamlined designs are identical to straight lines, curves, and sharp shapes.

The main image: comfortable, calm, not boring, and modern. The atmosphere that will be given to the Gramedia bookstore's interior design puts forward a comfortable and calm atmosphere which is an obligation for a bookstore to provide that atmosphere. By giving a touch of modern style that is expected to give a unique, attractive impression, so it is not boring.

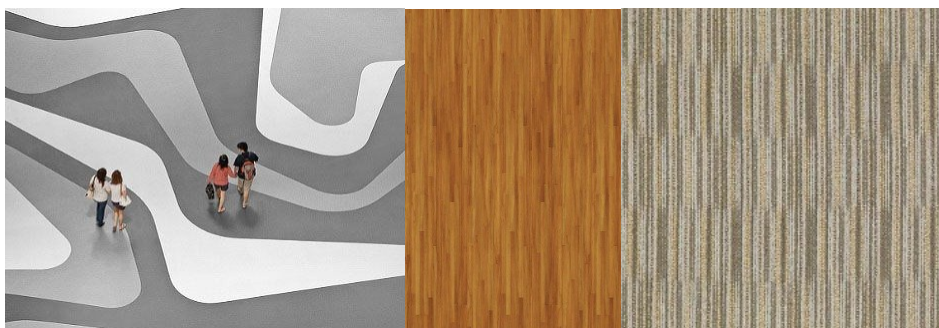


Figure 13. The concept of a streamlined floor



Figure 14. The concept of a streamlined wall



Figure 15. The concept of a Streamline Plafon

Designing the Interior design of the Martha Tilaar Salon Day Spa

In this design, it elevates the **Zen style** with the theme of **Natural Tranquility**. This style is taken because considering the main purpose of the spa is to provide relaxation to its visitors so that this style is suitable for the interior and atmosphere needed by a spa by highlighting natural colors that are soothing and soothing. This Zen-style application can be implemented into the interior design of the *Martha Tilaar Salon Day Spa* through the selection of colors and materials. The Zen style concept is focused on the **local wisdom of yellow bamboo** from the West Java region, to give a view to every society that many cultural varieties are hidden and should be preserved so that they can become something golden and of fantastic value. With relaxing colors, harmonious furniture arrangement, plus a touch of plants that make it cooler, makes Zen style can collaborate with bamboo designs that begin to elevate the image of the Indonesian nation domestically and abroad. Become a healthy design to implement in a room.



Figure 16. The floor plans of Salon & Spa



Figure 17. Interior Salon & Spa



Figure 18. Interior Salon & Spa



Figure 19. Interior massage room

Designing the Interior design of the Prambanan Heritage Hotel.

The style and theme concept for this hotel is "**Heritage country style of Prambanan**". The country-style applied to this hotel is the local country style, namely the rural style of Central Java, especially the Prambanan temple area. Country style has a characteristic that is easily recognizable, where it is dominated by earth tone colors, exposed material, and various vintage and heritage objects arranged in such a way as to become an element of decoration. In the decor of **the country local style** area of the Prambanan temple area, it will use wood elements as the main wall coverings, with wood and stone left as is with 149 original-looking textures. Also for furniture, always use *the classic or vintage type* or with heritage items. So that furniture can blend with the wall and create a comfortable and warm atmosphere. With the location of the hotel in the Prambanan temple area, we can input the heritage concept of Prambanan as accessories, forms of wall ornaments and furniture in the hotel so that it can be more memorable and in harmony with the hotel.



Figure 20. Local Wisdom Concept



Figure 21. Interior Selasar



Figure 22. Interior dining room

Designing the Interior design of the Residential Interior Design

Style: Modern is a style that is simple, clean, functional, stylish, and always keeps up with the times, using efficient and functional furniture.

Theme: Batik Kawung This concept adopts from one of the batik motifs in Yogyakarta, namely kawung. This kawung batik motif will be transformed into a form of interior elements in a residential house. The composition of the local content of Yogyakarta is applied to the treatment of walls, floors, and walls of staircases. The kawung Jawa pattern is an accent that creates a unique character in this modern tropical dwelling. Kawung batik motif with a round pattern similar to kawung fruit, a type of coconut or better known as *kolang-kaling*. There are also those who interpret the kawung motif to resemble a lotus flower with four broken flower leaves arranged in a row, as a symbol of longevity and holiness.

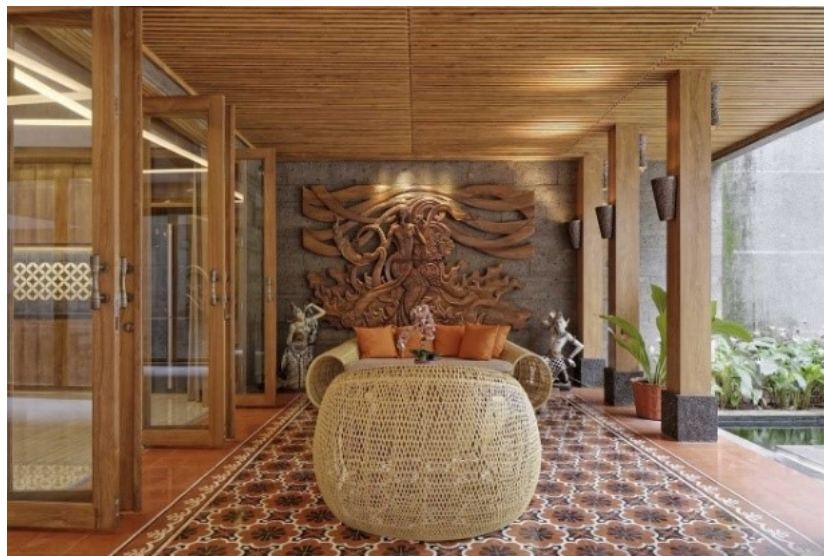


Figure 23. Omah Kawung

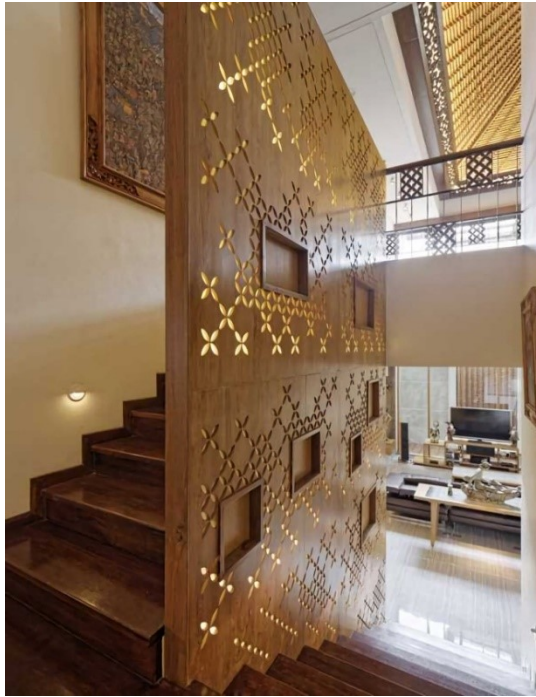


Figure 24. Border wall of the stairs with kawung motifs

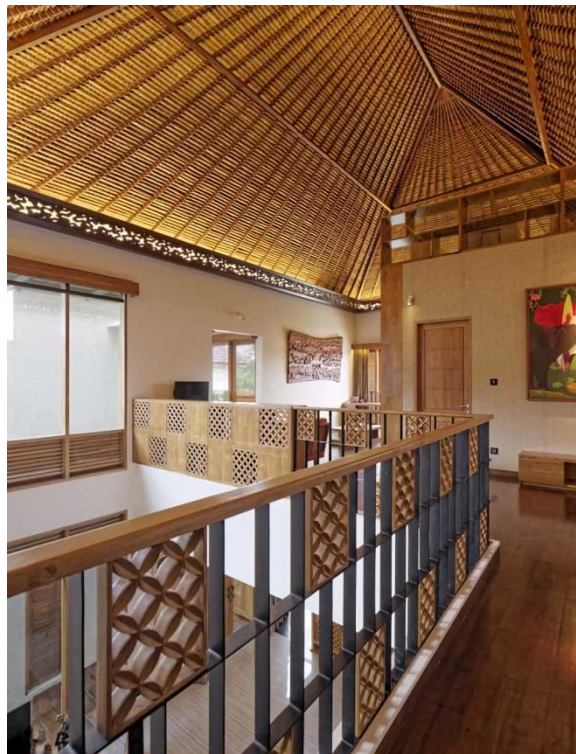


Figure 25. Kawung motifs on the walls of the void

Variables in local wisdom on interior design and design-related designs is a form of design transformation in achieving the concept of local wisdom. Design interpretation is done by combining the elements of local wisdom into the design such as on floors, columns, stairs, walls, furniture, etc. While the exploration of local materials applied to decorative, building structure or space forming elements. The application of local wisdom elements can enrich the value of history, aesthetics and become a

supporter of the growth of local cultural values, a creation of human works which is a cultural artifact of the results of human civilization.

CONCLUSION

Local wisdom is something that can be interpreted as good cultural values that exist in the community. * For that, in designing interior design elements of local wisdom from a particular region should we understand the cultural values first, so that it can give a scientific strength to the interior design. Actually, these values of local wisdom have been taught hereditary by our parents. It is proper for us as the young generation to re-apply the values of local wisdom in order not to be lost swallowed by the development of the era.

The element of local wisdom that is incorporated in the design of a particular style into the shape, color and selection of materials is expected to give a strong cultural effect in the development of interior design ahead, increase the cultural richness and can remain Raised through the application of its interior design and can make an attractive interior design for the world of education, the world of profession and community of users.

SUGGESTION

The concept of interior design has properties that are easy to develop and more frequent changes in trends always refer to what is currently popular. Always changing styles from all different eras. For this reason, we as interior industry players must be able to keep up with the current developments in interior design.

REFERENCES

- Nation, I. S. P. (2001). *Learning vocabulary in another language*. Cambridge: Cambridge University Press
- Abercrombie, Stanley. (1990). *A Philosophy of Interior Design*. New York: Harper & Row Co.
- Atmadi, T. (2016). Kajian Metode Pendekatan Desain Interior, *Jurnal Narada* Vol.3/no.1/4/2016
- Freddy Hendrawan. (2016). Kearifan Lokal Dalam Arsitektur Dan Desain Interior: Studi Komparasi Empat Konsep Di Asia, *STDI Bali/Juni*
- Kilmer, Rosemary. (1992). *Designing Interiors*. California: Wadsworth Publishing Company.
- MZ Suriastuti. (2014). Konsep kearifan local diterapkan pada Perancangan Arsitektur dan Interior di Gedung Balaikota Bandung, *Jurnal Itenas Rekarupa*, No. 1 Vol. 2/12/2014
- Mahdi, A. (2017). Memahami Pluralitas Konteks dan Lokalitas Citra Seni Rupa Kontemporer Indonesia, *Jurnal Narada* Vol.4/no.1/Januari/2017, ISSN:2477- 5134
- Nugroho, Y. (2016). Tahapan Perencanaan Desain Interior, *Jurnal Narada* Vol.3/no.1/4/2016 ISSN:2477-5134
- Paul Laseau, *Graphic Thinking for Architects & Designers*. (1980). RD Prasetya. (2008). Potensi Gaya Desain Lokal dalam Desain Interior di Yogyakarta, Seminar Nasional "Sensibility Culture, People, and Environment in Design"
- Stella Rossa Zarifa Sholihah. (2016). Desain Interior Museum Folklore Yogyakarta dengan Konsep Kearifan Lokal di Yogyakarta, *UNS-F. Seni Rupa dan Desain*
- Santosa, Adi. (2005). Pendekatan Konseptual dalam Proses Perancangan Interior, *Jurnal Dimensi Interior*, Vol. 3, No. 2, Universitas Kristen Petra Surabaya