

## BIOKLIMATIK BUILDING OF MICE AT LASWI BANDUNG

AQIDON NOOR KHAFID

Program Studi Arsitektur, Universitas Mercu Buana

### CAPITAL DRIVEN ARCHITECTURE

Indonesia is a country with a developing economy. We can see the progress of a country from the architectural works in it. Architecture is a product of capitalism, meaning architecture that is driven by capital. If we talk about architecture, it is very much related to commerce, which some consider taboo, when it comes to money. In fact, without money, architecture cannot be built!

### WHAT COMES NEXT? ARCHITECTURE THAT SUITS THE ECONOMIC CONTEXT?

Why don't we make an example of a Bioclimatic concept MICE building, because the average MICE building in Indonesia is formal? we make SOMETHING UNIQUE, DIFFERENT, VERY BIOCLIMATIC and energy efficient

### WHAT DOES THIS HAVE TO DO WITH BIOCLIMATICS?

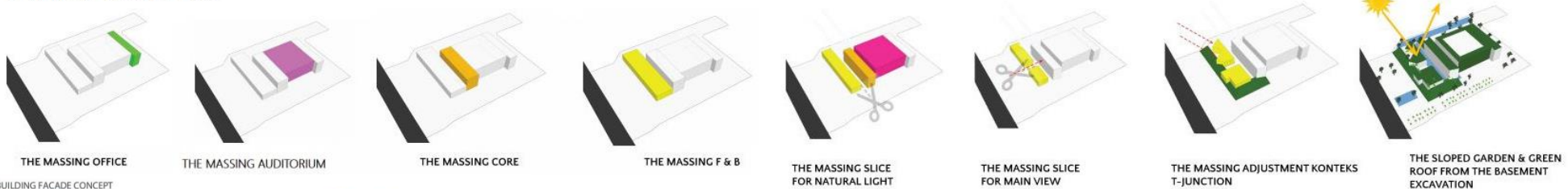
The Bioclimatic MICE concept is one of the design approaches chosen, namely sustainability and dialogue with the climate. So this building will use as little energy as possible so that it will have a big impact on the capital for this building.

### FUTURE BIOCLIMATIC DESIGN?

Buildings have a value that will decrease, but that depends on the experimental design of this building. Already thinking about future design inflation.



### CONCEPT OF MASS CHANGE



**BUILDING FACADE CONCEPT**

We will apply the shape of the station building, which still has a colonial architectural style in its mass in the middle area with large openings, to the MICE building.

**Efficient design**  
Designing buildings that can adapt to the local climate to minimize energy expenditure and resources used, avoiding leaks and wastage.

**CONCEPT OF FINISHING MATERIALS**

Sustainable materials: Materials like wood, stone, natural fibre and recycled materials should be used to minimize the impact of the building.

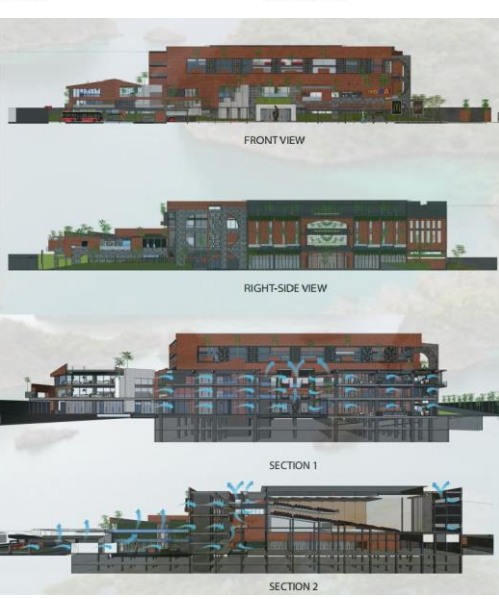
**CLIMATE ANALYSIS**

**SITE AND ENVIRONMENTAL CONCEPTS**

This site design concept has a philosophy that takes from traveling by train which starts and ends at a station which is connected by a railroad track as a link and on the way you can see all the beautiful views of the trees and rice fields. The mass of the mice building divides the mass of the building into different functions, like a train station with different purposes, and the mass is connected by a bridge like a railroad track, while enjoying the view.

**SPACE DESIGN CONCEPT**

1. SECTION AREA CORE RAMP STAIRS WITH DEVELOPT AND CONNECTING INTERSECTION  
2. USE RAMP AS A WAY TO ENJOY A SPACE EXPERIENCE  
3. AIR CIRCULATION THROUGH ENTRY WITH THE AIR FLOW  
4. CENTER FOR HANGING AND CIRCULATION FROM HIGH PRESSURE TO LOW PRESSURE



THE SPATIAL ARRANGEMENT OF THIS BUILDING PRIORITIES GOOD CIRCULATION AND IS EASY TO REACH AND USER FRIENDLY. IN ACCORDANCE WITH THE FUNCTIONAL CHARACTER OF THE SPACE WHERE THE MAIN AREA IS POSITIONED IN THE MIDDLE OF THE CORE AND ALSO THE OFFICE, OF COURSE IT IS VERY IDEAL IN HIERARCHY AND ALSO CIRCULATION. WE MADE A REFLECTION CHARACTER POOL BETWEEN THE MASS OF THIS BUILDING TO RAISE THE THERMAL TEMPERATURE OF THE AIR BEFORE ENTERING THE BUILDING, SO THAT COOLNESS CAN BE FELT INSIDE. WE INPUT NATURAL ELEMENTS ACCORDING TO THE CONCEPT OF BIOCLIMATICS WHICH CAN DIALOGUE WITH NATURE, SUCH AS WATER AND ALSO PLANTS. WITH THIS CONCEPT, WE CAN ATTRACT VISITORS TO FEEL A DIFFERENT EXPERIENCE AND CAN FEEL THE SENSE OF PLACE. FROM HERE THE CAPITAL DRIVEN ARCHITECTURE WAS CREATED IN ACCORDANCE WITH THE PURPOSE OF THIS WORK

